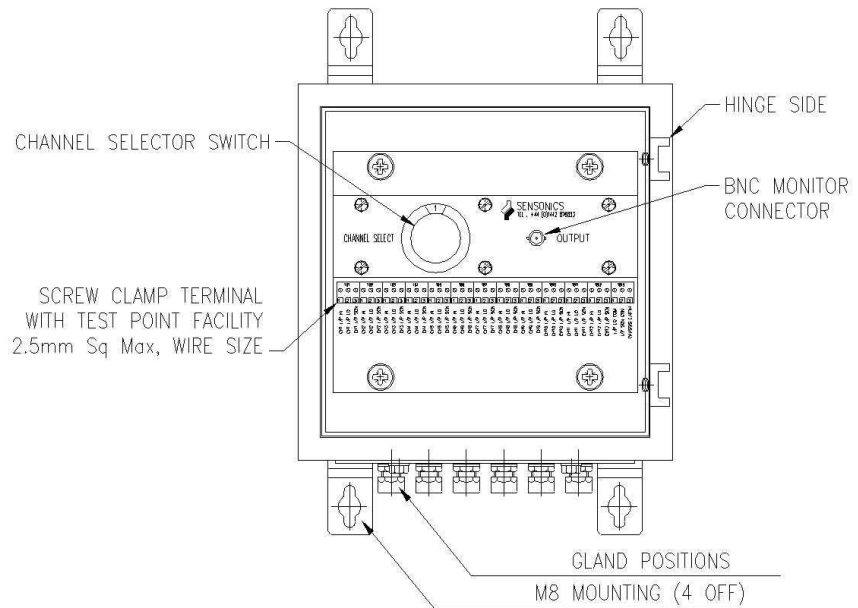


SWITCH BOX ENCLOSURE SERIES

2 to 60 WAY TYPE SWB2 – SWB60



- Simple and fast data collection
- Use with any 2 wire transducer (special 3 & 4 wire units available)
- Grounded PCB design to reduce noise
- Individual channel isolation
- Painted or stainless steel enclosure
- Fast cable termination terminals
- Low cost enclosures
- Standard BNC output connector (others available)

The SENSONICS SWB ranges of switch boxes are designed for on site monitoring or data collection of up to 60 channels of Vibration or Temperature.

The housings provide protection against harsh environments, dust and water to IP66 and are available finished in painted or stainless steel. Wall mounting brackets are supplied as standard.

Connection is by individual or multicore cable through a bottom entry gland plate. A single BNC socket is provided to enable monitoring of each channel selected by the channel selector switch.

A miniature version is available in painted steel for use where installation size is restricted, The box has no gland plate and can terminate a maximum of 12off M13 glands or 1off large multicore cable gland. The standard types of switch box offer a greater range of cable and gland size options with gland plates.

SWB - SWITCH BOX ENCLOSURE SERIES

Painted steel

Note: All dimensions are in mm.

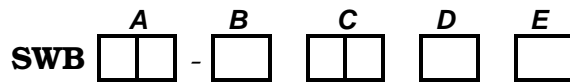
No. OF CHANNELS	TYPE	WIDTH	HEIGHT	DEPTH	A	B	No. OF SWITCHES
2 to 12	A	150	150	80	110	150	1 x SW1
2 to 12	B	250	250	155	180	312	1 x SW1
14 to 20	B	250	250	155	180	312	1 x SW2
22 to 40	B	400	250	155	330	312	2 x SW2
42 to 60	B	400	250	155	330	312	3 x SW2

Note: Switch types, SW1 has 12 channel capacity, SW2 has 20 channel capacity.

Stainless steel

No. OF CHANNELS	TYPE	WIDTH	HEIGHT	DEPTH	A	B	No. OF SWITCHES
2 to 12	C	240	240	155	180	270	1 x SW1
14 to 20	C	240	240	155	180	270	1 x SW2
22 to 40	C	360	240	155	300	270	2 x SW2
42 to 60	C	360	240	155	300	270	3 x SW2

ORDERING INFORMATION



A Number of Channels (In steps of 2 channels)

Example

0	4	4 Inputs
1	2	12 Inputs
4	8	48 Inputs

B Type (see table above)

- A Painted Steel RAL7032, 1.2mm thick, Miniature size
- B Painted Steel RAL7032, 1.2mm thick, Standard size
- C Stainless Steel 304 S15, 1.2mm thick, Standard size

C Number of Incoming Cables

Example

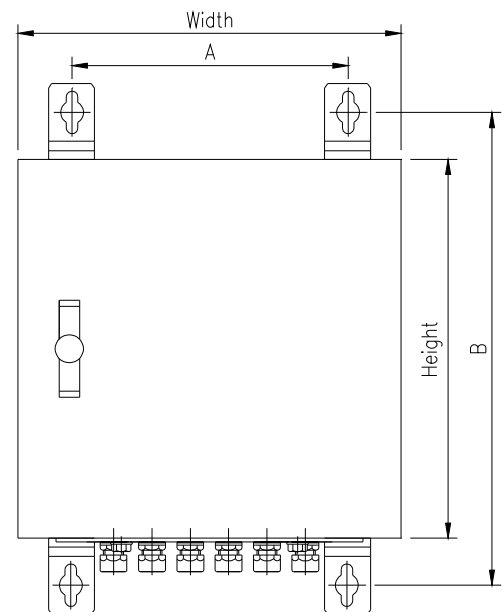
0	1	1 Single multicore cable
1	2	12 Individual cables

D Gland Size to Suit Cable Diameter

- 0 Glands not fitted
- 1 M13 Nylon to suit 4 to 7mm cables
- 2 M16 Nylon to suit 7 to 10mm cables
- 3 M20 Nylon to suit 10 to 14mm cables
- 4 M25 Nylon to suit 13 to 18mm cables

E Lid Locking Type

- 0 Standard DIN lock 3mm chrome plated
- 1 Plastic wing style handle
- 2 T handle with cylinder lock for higher security



CODE EXAMPLE SWB10-A0131

10 channel signal input switching box, in a 150x150x80 miniature painted steel enclosure with a single M20 cable gland for multicore cable and a lid mounted plastic wing style handle.

TECHNICAL SPECIFICATION

Material Sheet steel 1.2mm thick
 Protection (BS.EN.60529).....IP.66/Nema 4, 12 & 13. Stainless steel IP.66/Nema 4X, 12 & 13)
 Temperature rating-30 to +70°C

DS1170



Sensonics Ltd
 Northbridge Road
 Berkhamsted
 Herts, HP4 1EF
 United Kingdom
 Tel: +44 (0)1442 876833
 Fax: +44 (0)1442 876477
www.sensonics.co.uk