

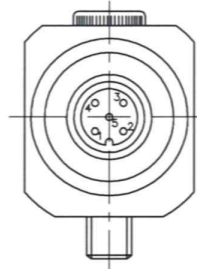
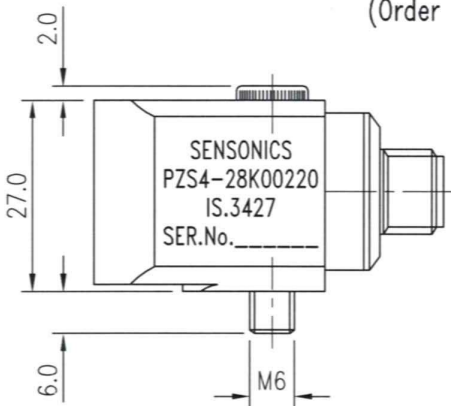
SPECIFICATION

SUPPLY VIBRATION 18-28Vdc, 2-10mA
 Constant Current Source
 SENSITIVITY (ACCEL) 100mV/g ±5%
 FREQUENCY RANGE 0.4Hz to 11KHz, 3dB
 SENSITIVITY (TEMP) 10mV/°C ±1°C
 (RANGE 0°C to +110°C)
 TEMP. RANGE -30°C to +110°C
 INGRESS PROTECTION IP.67
 SUPPLY TEMPERATURE 12-28Vdc

MATING CONNECTOR
Z03072
 (Order separately)

NOTE:

Connections to mating connector should be to pins 1-5 ONLY. (ie. No connection to body of connector.)

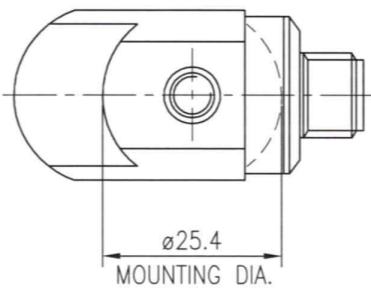


FOR ASSEMBLY SEE EA3271B/3
 FOR PARTS LIST SEE 046/5647A
 FOR TEST SPEC. SEE TS.1159

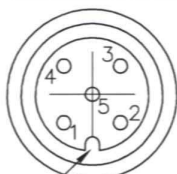
CONNECTION DETAILS

PIN	FUNCTION.
1	VIB V.in/Sig Hi
2	VIB OV
3	TEMP O/P Hi
4	TEMP EXC
5 (CENTER PIN)	TEMP O/P Lo

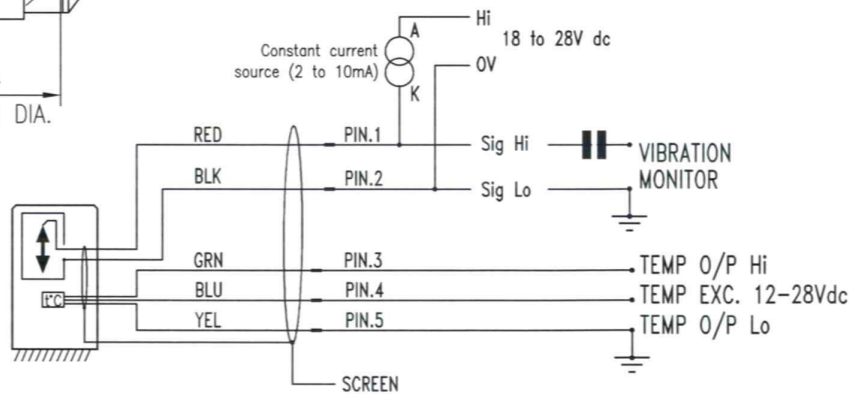
ALL ISOLATED FROM TxD BODY



PIN DETAILS



POLARIZING PEG



CONNECTION SCHEMATIC

ISSUE	DATE	CN. No.	MOD BY	CHECKED
-------	------	---------	--------	---------

CHANGE NOTES

PROJ.ENG. A.RILEY	SCALE 1:1
DRAWN A.PITT	DIM'NS mm
CHECKED A.RILEY	DATE 10/6/2005
CUST.REF. 6546	SHEET No. SHT 1 OF 1

SENSONICS LTD NORTHBRIDGE ROAD, BERKHAMSTED, HERTS, HP4 1EF, ENGLAND
 Tel : +44 (0)1442 876833 Fax : +44 (0)1442 876477

TITLE
 PZST4-28K00220 ACCELEROMETER 2 WIRE, WITH 3 WIRE
 TEMPERATURE SENSOR, SIDE EXIT 5 PIN M12 CONNECTOR,
 100mV/g 5% VIB O/P & 10mV/°C ±1°C TEMP O/P .M6 MOUNTING.

THIS DOCUMENT IS SUBJECT TO THE CONDITIONS
 IN THE ENCLOSED MEMO DS 742

DRAWING No. **IS.3427** ISSUE **1**