

# SL SERIES LVDT DISPLACEMENT TRANSDUCER



■ AC OPERATION

■ SPRUNG, GUIDED OR FREE  
CORE

■ SMALL DIAMETER BODY

■ LOW COST

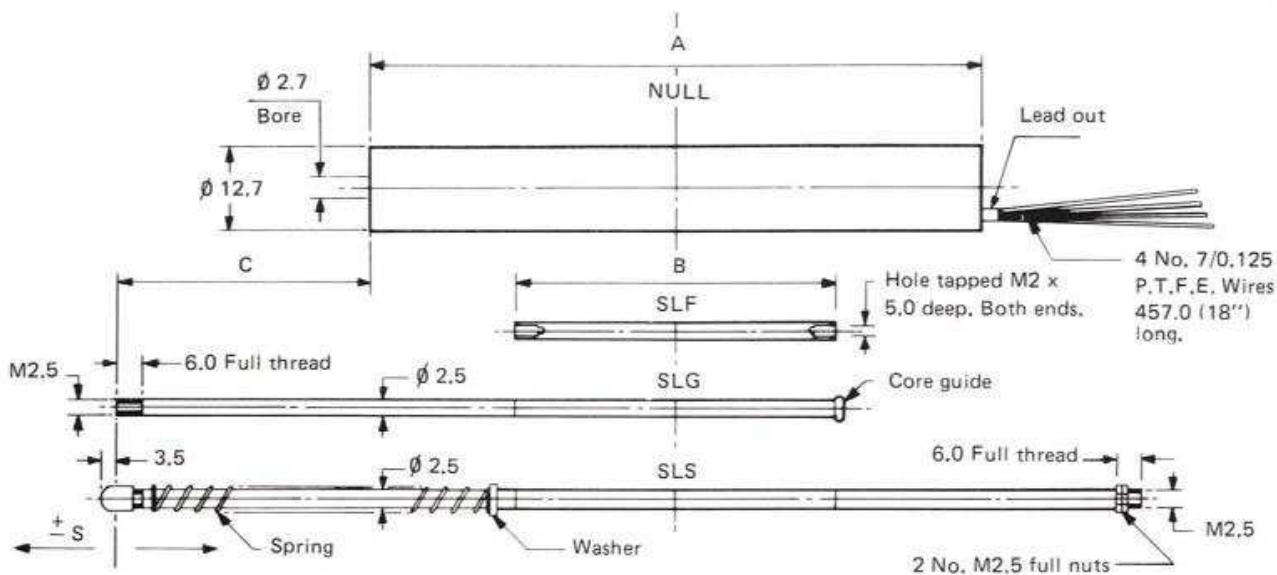
These Linear Variable Differential Transformer Displacement Transducers feature a 12.5mm (0.5") diameter body for OEM applications and use in restricted spaces. They are designed for operation on low voltage AC supplies at frequencies from 50Hz to 5KHz and are supplied complete with a free core and extension rod assembly. The stainless-steel body, bore tube and extension rod permit corrosion-free operation in most environments. Colour-coded flexible PTFE lead-out wires of 0.5mm (18") length emerge through one end face of the body.

The moving core is normally fitted with an integral extension shaft which is threaded for attachment to the source of movement. If required, the core may be supplied without the extension rod, the core then having a plain or threaded hole according to requirements.

L. 076

**SENSONICS**

**SL Series LVDT DISPLACEMENT TRANSDUCER**



**SPECIFICATION**

- Input voltage . . . . . From less than 1v to 10v RMS, 50Hz to 5KHz
- Maximum primary current . . . . . 10mA
- Temperature range . . . . . From 0°C to 90°C
- Linearity . . . . . Better than ± 0.5%
- Mounting arrangement . . . . . By clamp around the body (clamp not supplied)

Type No.	Stroke ±S m.m.	A	B	C	Individual specification no.			Output at Full range (3KHz)
					SLF Free core	SLG Guided core	SLS Sprung core	
SL-2.5	2.5	33.5	20.3	33.5	I.S. 132	I.S. 136	I.S. 140	50mv/v
SL-5	5.0	48.0	22.86	36.0	I.S. 133	I.S. 137	I.S. 141	90mv/v
SL-12.5	12.5	78.0	38.1	43.5	I.S. 134	I.S. 138	I.S. 142	400mv/v
SL-25	25.0	122.0	60.96	56.0	I.S. 135	I.S. 139	I.S. 143	600mv/v

**ORDERING INFORMATION/OPTIONS**

**OPTIONS**

Different lengths of integral lead out wires

**Ordering Information**

When ordering request unit by Type No. and IS No. or state requirements by specifying options.

We reserve the right to alter the specification without notification